



GOBIERNO DE LA REPÚBLICA DE  
**PANAMÁ**

A student wearing safety glasses and a light-colored shirt is working on a mechanical component in a workshop. The background shows various tools and equipment, including a large vertical machine on the right. The entire image is overlaid with a dark blue semi-transparent filter.

**ITSE** INSTITUTO TÉCNICO  
SUPERIOR DEL ESTE

# Context of ITSE

- Shortage of skilled workers
  - Several studies conducted from different sources
- Need to improve technical education
- High school students face difficulties in admission processes to universities
- Vocational curriculum misaligned to labor market demand
- Great interest in Technical Education among different sectors in the country



# What is ITSE

- ✍ Post-media education (completion of 12 years of study required)
- ✍ Hands on learning experience
- ✍ Students coming from public schools (not required but likely)
- ✍ Modern structure
- ✍ Two (2) years programs
- ✍ Facilitate insertion to industry or continue to higher education
- ✍ Great emphasis on soft skills
- ✍ **New culture proven to provide great results**



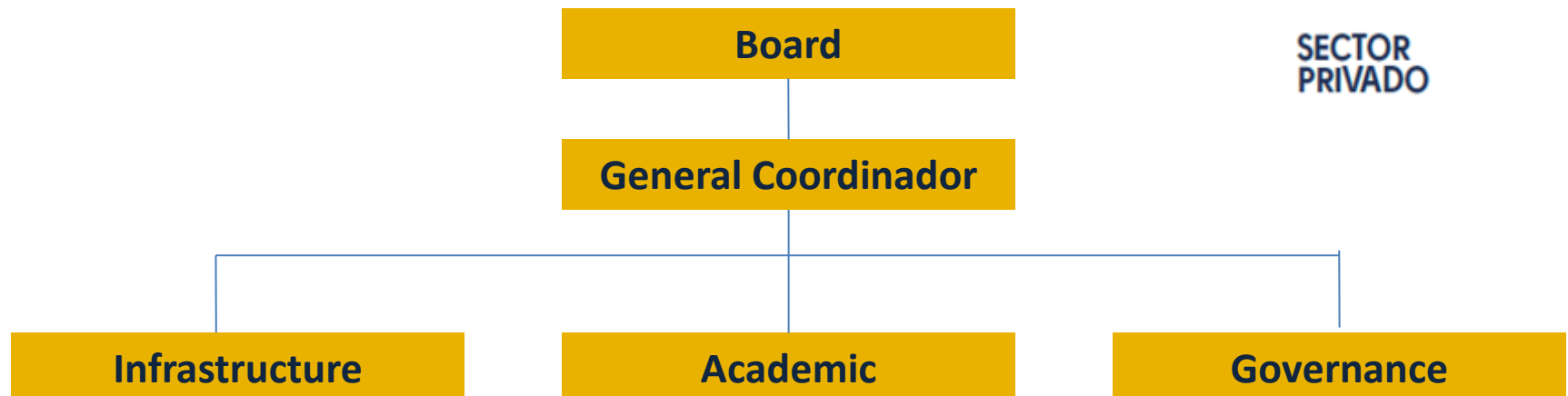
# How is ITSE administrated today

- **Board**

- 📖 Ministry of Presidency
- 📖 Ministry of Education
- 📖 Ministry of Labor
- 📖 Minister of Trades and Industries of Panama
- 📖 President of Technological University of Panama
- 📖 Head of the Office of Presidential Goals
- 📖 Representatives from the Private Sector
- 📖 Representative of the President



SECTOR  
PRIVADO



# Schools and Programs



8 Departments

18 Programs

School	Department		Program
<b>Engineering and Technology</b>	<b>Construction</b>	1	T. S. Construction Material Lab Technician
		2	T.S. Building construction
		3	T.S. Finishing Works Supervisor
		4	T.S. Structural Welding
		5	T.S. Planning and scheduling services
		6	T.S. Building information Technology
	<b>Industry</b>	7	T.S. Industrial Maintenance Services
		8	T.S. Automotive Technology (Light vehicles)
		9	T.S. Air-Conditioning and Refrigeration
		10	T.S. Automotive Technology (Heavy vehicles)
	<b>Aerospace</b>	11	T.S. Aerospace Technology
		12	T.S. Aerospace Avionics

School	Department		Program
Business	Finance	13	T.S. Business Services
	Logistic	14	T.S. Logistics Operations
	Languages	15	T.S. Bilingual Executive Assistant
Hospitality and Tourism	Tourism	16	T.S. Tourist Guide
		17	T.S. Culinary Arts
	Hospitality	18	T.S. Hotel Operations
			<b>TOTAL = 5000</b>



# Construction process





# Schools











LÍNEA 2 DEL METRO

INADEH

AVE. DOMINGO DÍAZ



ITSE INSTITUTO TÉCNICO SUPERIOR DEL ESTE

UTP

AIT,S.A.

PROY. DE TREN AEREO A NUEVA TERMINAL

CORREDOR SUR

NUEVA TERMINAL

BULEVAR

> 100,000 m<sup>2</sup>

CONSTRUCCIÓN

- **Key elements for success**

- Learn from those who have succeeded in this path
- Key stakeholders in the Board
- Empowerment from the private sector
- Programs aligned with demands
- Change in paradigms about technical education



ITSE will provide the best technical education, particularly to those who needed the most: young Panamanians